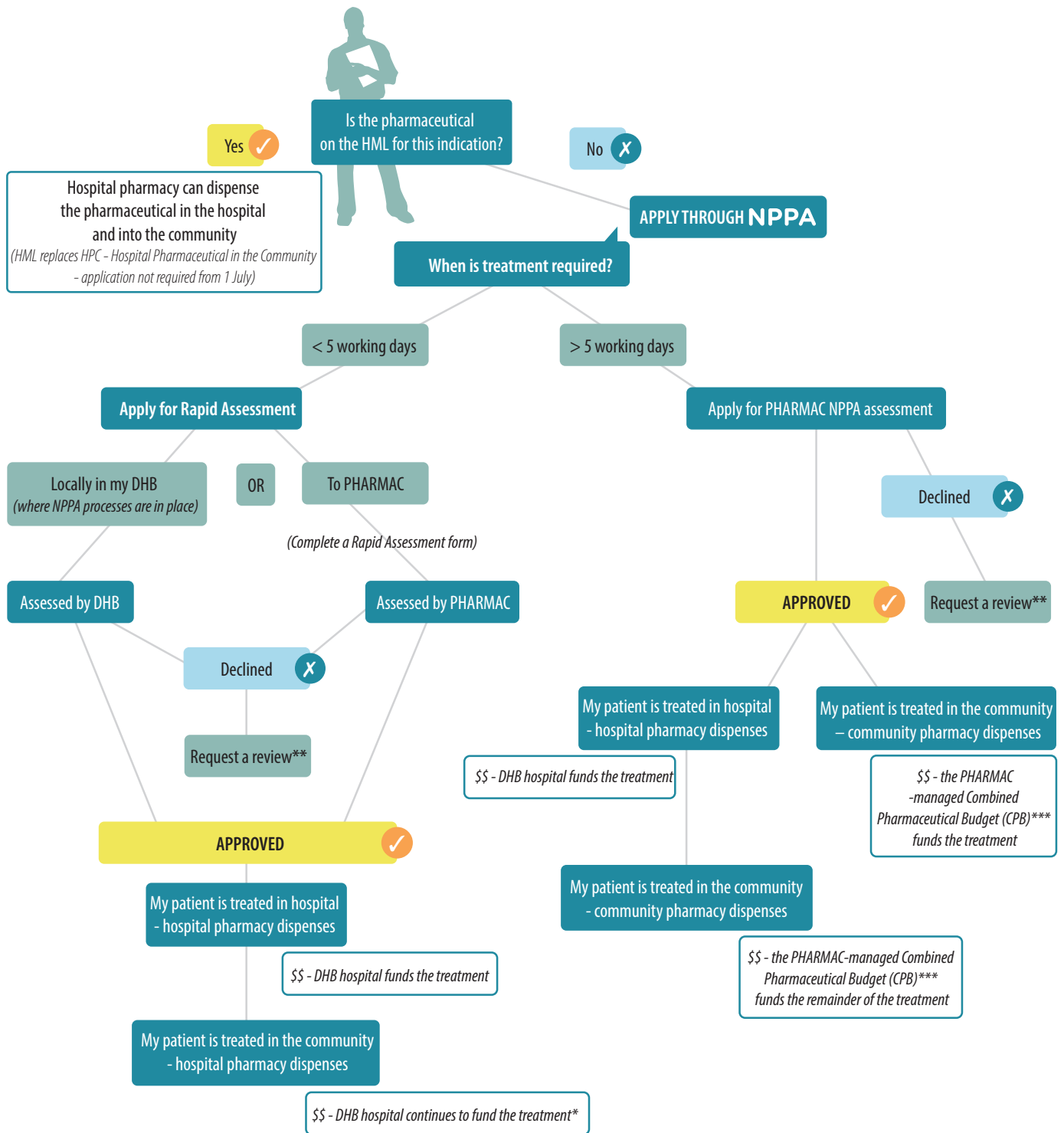


What are my choices from 1 July 2013 if I want to make a NPPA application for a pharmaceutical to be initiated in hospital that is not listed on the Hospital Medicines List (HML) or not listed for the indication?



**Key**

\$\$ = How the pharmaceutical will be funded

\* If PHARMAC undertakes a Rapid Assessment it MAY decide to fund on-going treatment from the Combined Pharmaceutical Budget (CPB). PHARMAC will assess that decision on an individual basis.

\*\* A PHARMAC review of the process will be available for applications that are declined. Reviews are also available for Rapid Hospital Assessments made by DHBs.

\*\*\* The CPB is managed by PHARMAC, but funded by DHBs on a population basis.

**Notes**

1) All NPPA pharmaceutical cancer treatment (PCT) applications MUST come to PHARMAC for assessment and are funded from the PHARMAC-managed CPB.

2) All DHB hospital Rapid Assessment outcomes should be reported to PHARMAC within 1 month.