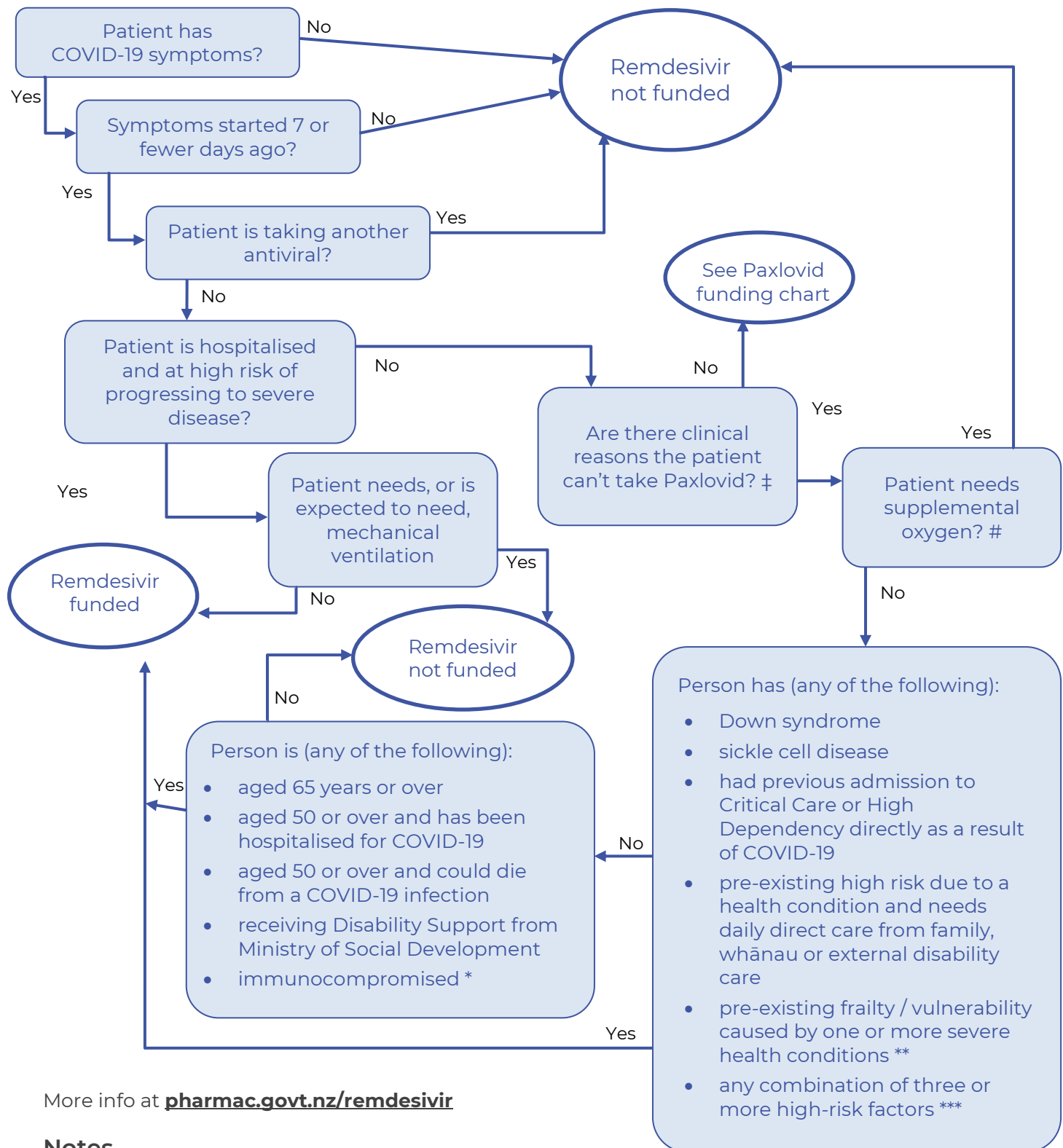


Remdesivir access criteria for public hospitals

1 September 2025



More info at pharmac.govt.nz/remdesivir

Notes

supplemental oxygen to maintain oxygen saturation >93% or at or above baseline for people with chronic resting hypoxia

‡ including but not limited to using the [Liverpool COVID-19 Drug Interaction Checker](#)

* [Identifying people who are severely immunocompromised](#) on Pharmac website

** Health conditions that include severe or very advanced disease including, but not limited to, severe neurological, cardiovascular, renal and respiratory conditions

*** [High risk factors for severe illness from COVID-19](#) on Pharmac website