



**PHARMAC factors for consideration**

are used throughout



**PHARMAC factors for consideration**

are used throughout



# The journey of a funding application

A medicine supplier, health professional or an everyday New Zealander can apply for a medicine or medical device to be funded.

## Prepare

your application by collating all relevant information



## Discuss

your application with someone from PHARMAC



## Submit

your application via PHARMConnect



## APPLICATION TRACKER

See your application status online

## Advice

PHARMAC receives recommendations from independent clinical experts from across New Zealand's healthcare sector who sit on the Pharmacology and Therapeutic Advisory Committee (PTAC) and its subcommittees



## Review

PHARMAC reviews and evaluates the evidence, including others' submissions on the same medicine or medical device



## Assess

PHARMAC considers the clinical advice and assesses the medicine. Research & economic analysis take place



HIGH  
RANKING  
LOW

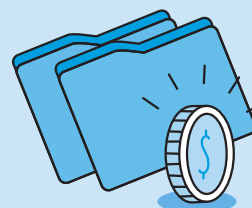
## Compare options

PHARMAC compares and ranks medicines

Prioritise  
A prioritised list of medicines for funding is created

## Negotiate

PHARMAC negotiates price with suppliers



## Identify

PHARMAC identifies which medicines on the list to take forward



CONSIDER SUBMISSIONS

## Provisional agreement

PHARMAC and the supplier confirm a provisional agreement



## Consult

We ask New Zealanders what they think



## Final decision

The PHARMAC board or delegate makes a final decision



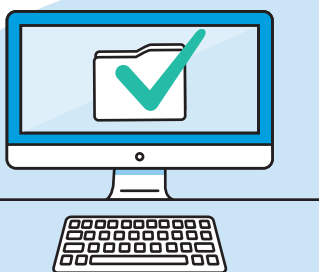
## Final changes

PHARMAC staff make any changes necessary following the consultation submissions



## Notification

PHARMAC notifies the decision to health professionals and the public



## Listed

If approved, the medicine or medical device is listed on the pharmaceutical schedule



**PHARMAC**  
TE PĀTAKA WHAIORANGA

For further information visit [pharmac.govt.nz](http://pharmac.govt.nz)



## APPLICATION TRACKER

See your application status online