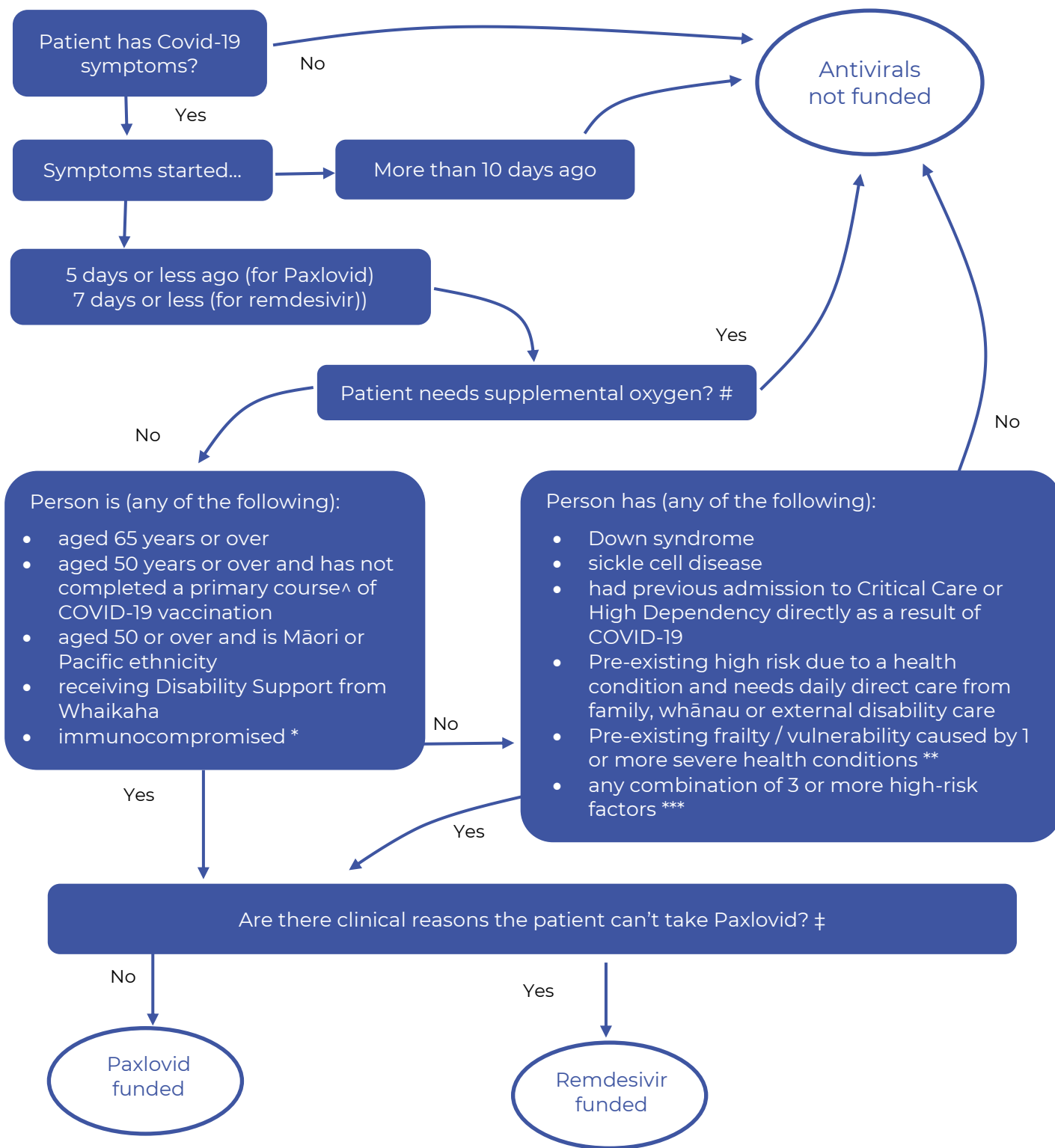


COVID-19 antiviral access criteria

1 February 2024



Notes

supplemental oxygen to maintain oxygen saturation >93% or at or above baseline for people with chronic resting hypoxia

^ a 'primary course' defined as having at least two courses of vaccination against COVID-19. Two injections for most people, three for immunocompromised people.

* Identifying people who are severely immunocompromised listed on Pharmac website

** Health conditions that include severe or very advanced disease including, but not limited to, severe neurological, cardiovascular, renal and respiratory conditions

*** High risk factors for severe illness from COVID-19 listed on Pharmac website

‡ including but not limited to using the Liverpool COVID-19 Drug Interaction Checker