

dosage

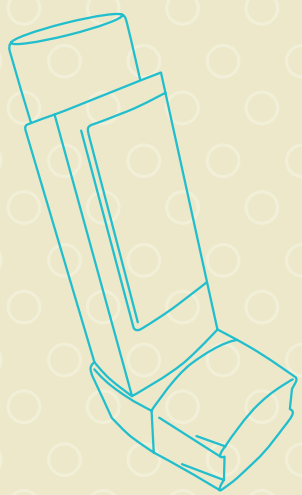
DOSE EQUIVALENCE AND BACK TITRATION FOR COMMONLY USED INHALED CORTICOSTEROIDS

- Fluticasone is twice as potent as beclomethasone or budesonide¹
- When titrating dose, wait 12 weeks to judge effect²
- Back titrate stable patients by 25% of total daily dose²
- The dose response curve for inhaled corticosteroids flattens around 500-1000µg beclomethasone/budesonide (250-500µg fluticasone) per day¹

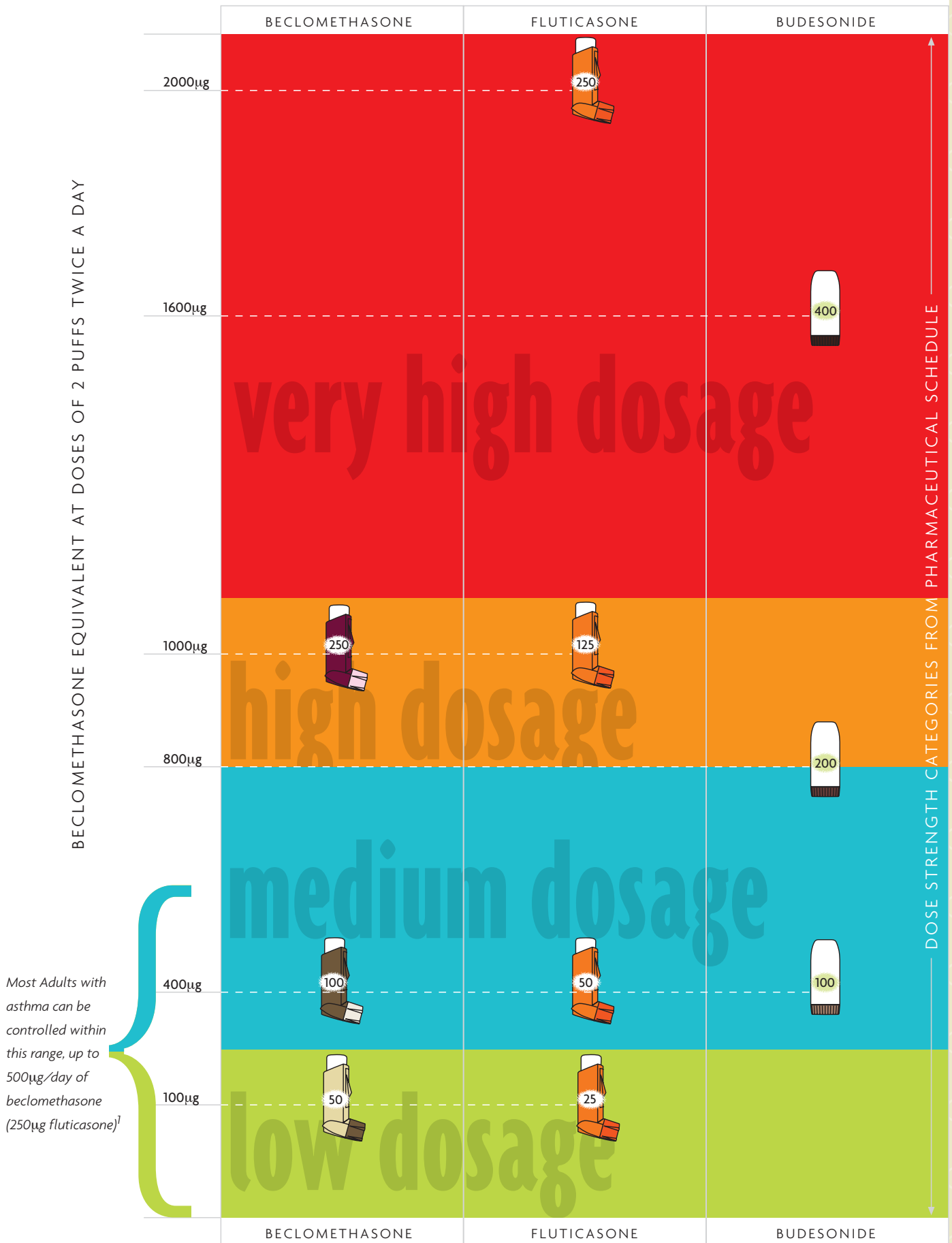
References:

¹Best Practice Evidence-Based Guideline
The Diagnosis and Treatment of Adult Asthma, September 2002
 New Zealand Guidelines Group

²British Guideline on the Management of Asthma
Quick Reference Guide, October 2002
 Scottish Intercollegiate Guidelines Network (www.sign.ac.uk)
 British Thoracic Society (www.brit-thoracic.org.uk)



DOSE EQUIVALENCE FOR COMMONLY USED INHALED CORTICOSTEROID INHALERS



Note: Strength categories are consistent with those outlined in the Pharmaceutical Schedule