

Pharmaceutical Management Agency

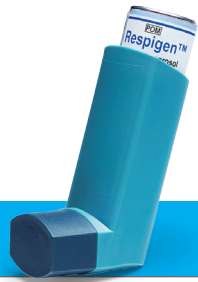
Level 14, Cigna House, 40 Mercer Street, PO Box 10-254, Wellington 6143, New Zealand  
Phone: 64 4 460 4990 - Fax: 64 4 460 4995 - [www.pharmac.govt.nz](http://www.pharmac.govt.nz)  
Freephone Information line (9am-5pm weekdays) 0800 66 00 50

Pharmaceutical Management Agency

# Comparing Salbutamol Inhalers



# Comparing Salbutamol Inhalers



**Respigen**



**Salamol**



**Ventolin**

	<b>Respigen</b>	<b>Salamol</b>	<b>Ventolin</b>
<b>Active ingredient</b>	Salbutamol	Salbutamol	Salbutamol
<b>Strength</b>	100 micrograms per dose	100 micrograms per dose	100 micrograms per dose
<b>Number of doses</b>	200	200	200
<b>Contains alcohol</b>	Yes	Yes	No
<b>Fits spacers</b>	Yes	Yes	Yes
<b>Part charge</b>	<p><b>No part charge</b></p> <p>You pay only the government prescription charge. Ask your pharmacist what the charge is for you.</p>	<p><b>No part charge</b></p> <p>You pay only the government prescription charge. Ask your pharmacist what the charge is for you.</p>	<p><b>Yes, there is a part charge</b></p> <p>You will need to pay the part charge plus the government prescription charge plus a pharmacy mark-up. Ask your pharmacist what the price is.</p>

## All three brands have the same effect on your asthma

A puff of any of the three brands contains the same amount of the same active ingredient and has the same effect on your asthma. The brands taste and feel different when you spray them into your mouth but this does not affect how well they work.

## Salamol and Respigen contain a very small amount of alcohol

There is less than 5 milligrams of alcohol in each puff of Salamol or Respigen\*.

Using Salamol or Respigen at usual doses does not make it unsafe for you to drive and does not make adults or children drowsy.

## All asthma inhalers should be cleaned regularly

Clean your inhaler once a week with warm running water to stop it getting blocked.

See inside the box or ask your pharmacist for instructions.

\*For comparison, there is 10g of alcohol (2000 times as much) in a can of beer or a small glass of wine

